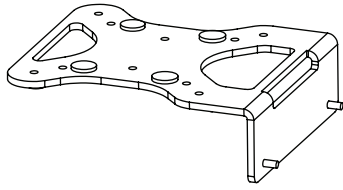


Taco - CPU Holder

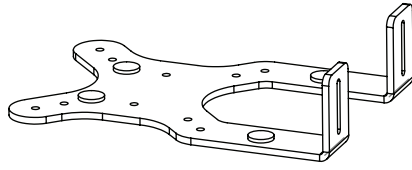
O & M Manual

Cleaning Guidelines:
Only use non-solvent based cleaner
Do not wet power sockets

PARTS



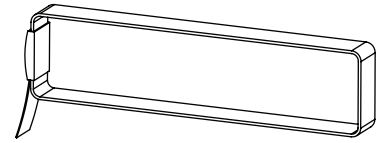
1x
Bracket



1x
Bottom Bracket

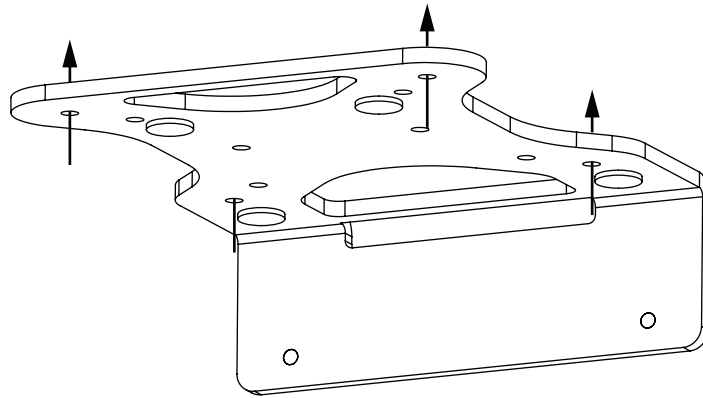


1x
Thumb Nut



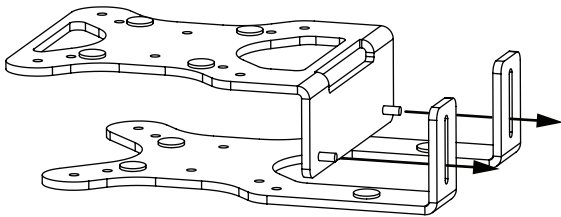
1x
Strap

1

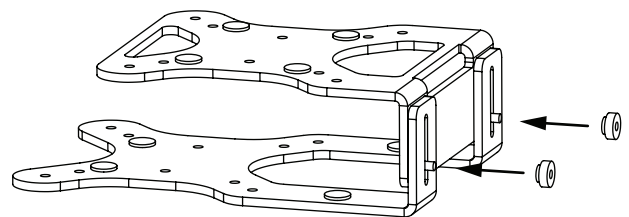


Attach unit to surface with screws via alignment holes.

2

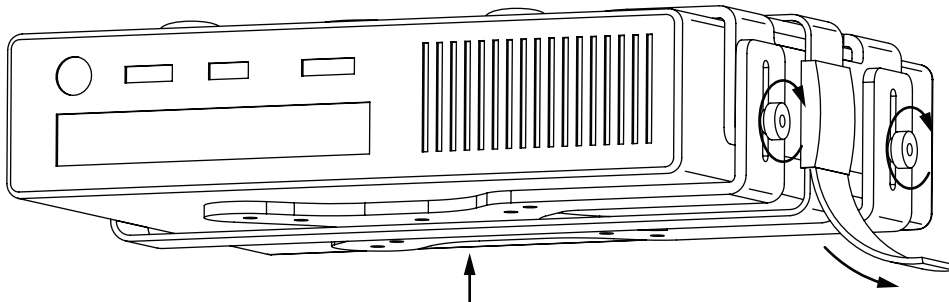


Feed threaded studs through slots.



Loosely tighten on thumb nuts.
Feed strap around CPU holder.

3



Push bottom plate against CPU, tighten thumb nuts, pull strap tight to secure CPU.